



Police & Crime Plan 2016–2021

Delivering even safer communities
for the whole of Cheshire

www.cheshire-pcc.gov.uk



David Keane
Police & Crime
Commissioner
for Cheshire

Contents

FOREWORD	3	FINANCES AND PEOPLE	12
THE ROLE OF POLICE & CRIME COMMISSIONER	4	WORKING IN PARTNERSHIP	13
CHESHIRE – OUR COUNTY AT A GLANCE	6	HOW I WILL COMMISSION SERVICES FOR OUR COMMUNITIES	14
YOUR POLICE SERVICE	7	GRANTS AND FUNDING	15
DEVELOPING THE PLAN	8	Victim Services	15
POLICE & CRIME PRIORITIES FOR CHESHIRE	9	Community Safety	15
A police service connected with our communities	10	HOW I WILL MONITOR SUCCESS	16
Support victims and protect vulnerable people	10	'JOIN THE CONVERSATION' ON POLICING AND CRIME	16
Prevent crime and anti-social behaviour	11	HOW TO KEEP IN TOUCH	18
A police service fit for the future	11		

Foreword

The safety of all Cheshire's communities is paramount, whether you live in a rural area or urban area, no matter what your background or personal circumstances – this Police & Crime Plan is for all of Cheshire.

It sets the priorities which Simon Byrne, the Chief Constable, will deliver so that people feel safe in their homes and communities and sets out my commitment to be your voice in policing in Cheshire.

In developing this Plan, I have listened carefully to what you, the public, have told me is important for your police service as well as speaking to partners and listening to the Chief Constable on the emerging policing threats for our county.

It sets out a vision for the next four years in which Cheshire will have a Constabulary focused on community policing, putting victims first. The legacy will be a police service fit for the future which is connected with, based within and accessible to local communities – real neighbourhood policing.

In achieving this I will bring Cheshire Constabulary, local councils, community safety and criminal justice partners together to make certain that in Cheshire we have the most effective and efficient police service and criminal justice system possible. I will provide you with a voice on both a local, regional and national level to support and challenge those tasked with delivering services for the public.

I have set out the resources available to the Chief Constable to deliver policing services and the funds I will make available to support victims cope and recover, promote community safety and reduce crime, anti-social behaviour and disorder. These will be reviewed annually.

Whilst this is a four year Plan, I am committed to continuing to listen to your views on policing. Throughout the next four years I will be spending as much time as possible out and about meeting and hearing from as many of you as I can. Through these conversations and my work with the Chief Constable, I will be able to consider whether this Plan remains relevant for Cheshire and refresh the Plan as needed.

This is a Plan founded on your priorities and a Plan to deliver even safer communities for the whole of Cheshire.

David Keane

Police & Crime Commissioner for Cheshire

The Role of Police & Crime Commissioner

My role as Police & Crime Commissioner is to provide you, the public, with a voice in policing in Cheshire.

As Commissioner I will listen to, and use the views of the public to set and shape the strategic priorities of the police service through the Police & Crime Plan. I set the police budget following allocation of the police grant by Government and I also set the police council tax precept for Cheshire.

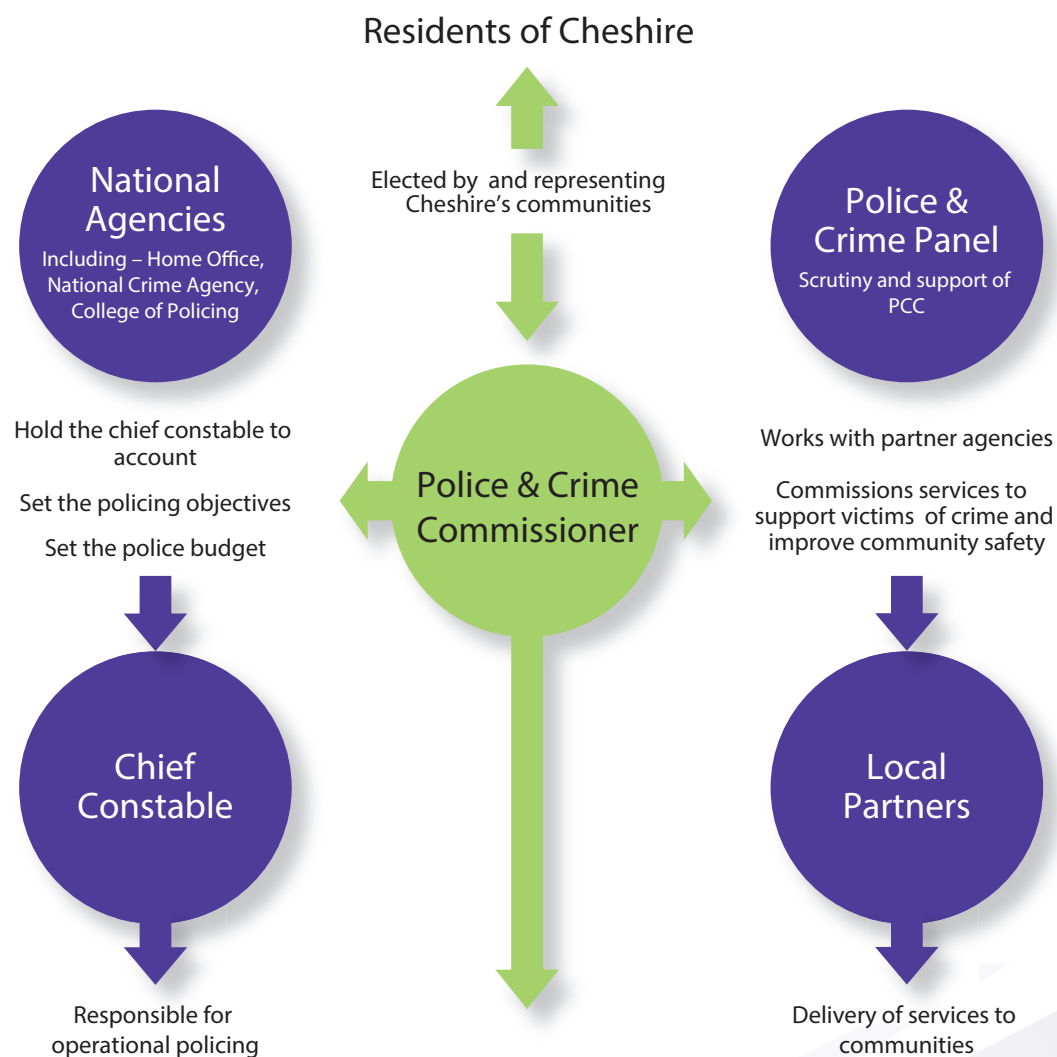
The priorities in this Plan will be used to support, challenge and hold to account Simon Byrne, the Chief Constable, on your behalf to ensure Cheshire has an effective and efficient police service. In doing so transparency will be paramount and I will make certain that information is available that allows Cheshire residents to assess the performance of policing in the county.

I also have wider responsibilities in relation to the criminal justice system and commissioning services to support victims and in relation to community safety, crime and disorder. This is something that cannot be achieved without close working with criminal justice and community safety partners across Cheshire.

However, it is also important that I am able to act as your representative in the criminal justice system and I will use my role to challenge partner agencies where needed to make sure they are delivering for you.

Full details of my statutory duties are available on my website at www.cheshire-pcc.gov.uk

POLICE AND CRIME LANDSCAPE



Working together for positive outcomes for communities

Cheshire – our County at a glance

- Cheshire has a population of just over one million people
- The policing area of Cheshire covers 919 square miles with a strategic crossroads in the national motorway infrastructure
- Cheshire consists of four unitary Borough Councils: Cheshire East, Cheshire West & Chester, Halton and Warrington
- There are 440,000 households in the County with an average of 2.33 people per household
- Whilst Cheshire has some highly affluent areas, there are also areas of multiple deprivation with pockets of deprivation in each of the four council areas
- The population of Cheshire is predicted to rise by approximately 60,000 in the next fifteen years
- The county is home to 53,108 students
- The average age of residents is 40.4 years
- Cheshire's population is predominantly made up of White British which account for 96.9% of the population. Mixed race is the next highest ethnicity at 1%, with Asian British Indian 0.5%, Asian British Other at 0.4%, Asian British Chinese at 0.3% and Black British at 0.2%
- Cheshire covers an area of great diversity, with large rural expanses, areas of extensive heavy industry and a number of urban areas

Your police service

The policing model introduced by the Chief Constable consists of eight Local Policing Units each headed by a Chief Inspector whose police officers, PCSOs and staff work to solve problems and crimes at a local level. Resources have been placed into response policing and local investigation and centralised crime recording and prisoner processing.

Working in support of the Local Policing Units are specialists whose focus is on addressing more serious crime and protecting the most vulnerable individuals and groups within our communities from harm. A Public Protection Directorate has capacity and specialist capabilities to tackle child sexual abuse, rape, domestic abuse, human trafficking and modern slavery. There is also a strong focus on reducing the considerable harm caused by organised crime groups and to prevent terrorism networks operating in the area. I will continue to support regional collaboration with other Commissioners and police services, including the Counter-Terrorism Unit and the Regional Organised Crime Unit which protect Cheshire communities. All units are supported by a range of professional and support staff.

During the course of this Plan, enhancing effective local community policing will be a core theme, providing assurance and confidence to the public. The

public's priority for the Chief Constable is to deliver a visible police service with officers, PCSOs and specialist staff engaged, based in and connected with local people and local communities, more of the time. An important element of this will be the Special Constabulary and the impressive range of volunteers, such as rural watch, custody visitors and many others, who make up the Cheshire police family.

This will also be reflected through the police estate. The focus for the Chief Constable will be to deliver an accessible police service based in the heart of our community - where they should be. This will include working with partners across the county to explore opportunities to share premises.

Cheshire will have a police service which will work from within our local communities, and deliver for our local communities; real neighbourhood policing.

Developing the Plan

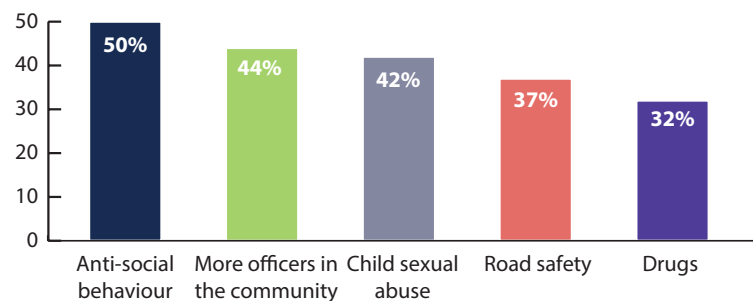
The priorities set out in this Plan have been developed with the public of Cheshire as well as the Chief Constable, key partners and stakeholders across the county.

On coming into office the first thing I set out to do was to get out and listen to as many people as possible about what is important for local communities. During six weeks of public consultation, I received over 2,400 responses as well as having thousands of conversations with residents, community groups and elected community representatives. The results showed a consistent set of public priorities across the four Local Authority areas of Cheshire.

As well as listening to the public and partners, I have also taken into account the Chief Constable's assessment which outlines key emerging threats and risks for the Constabulary, Cheshire's community safety needs assessment and the Home Secretary's Strategic Policing Requirement.

This has given me a clear understanding of the key issues and challenges that policing in Cheshire faces and what is important to our communities.

PUBLIC CONSULTATION - WHAT YOU TOLD ME



CHIEF CONSTABLE'S ASSESSMENT

Public protection
On-line crime
Organised crime groups
Policing in a digital age – maximising technology to investigate crime
Violent crime
Criminal Justice System – digitalisation & legislative change
Regional infrastructure improvements – to minimise disruption for road users and limit criminal opportunity

CHESHIRE COMMUNITY SAFETY NEEDS ASSESSMENT

Protecting people from harm, victimisation and vulnerability
Reducing reoffending
Organised crime groups
Counter-terrorism
Reducing the impact of substance misuse
Anti-social behaviour
Road safety
Meeting public expectations & working together

HOME SECRETARY'S NATIONAL STRATEGIC POLICING REQUIREMENT

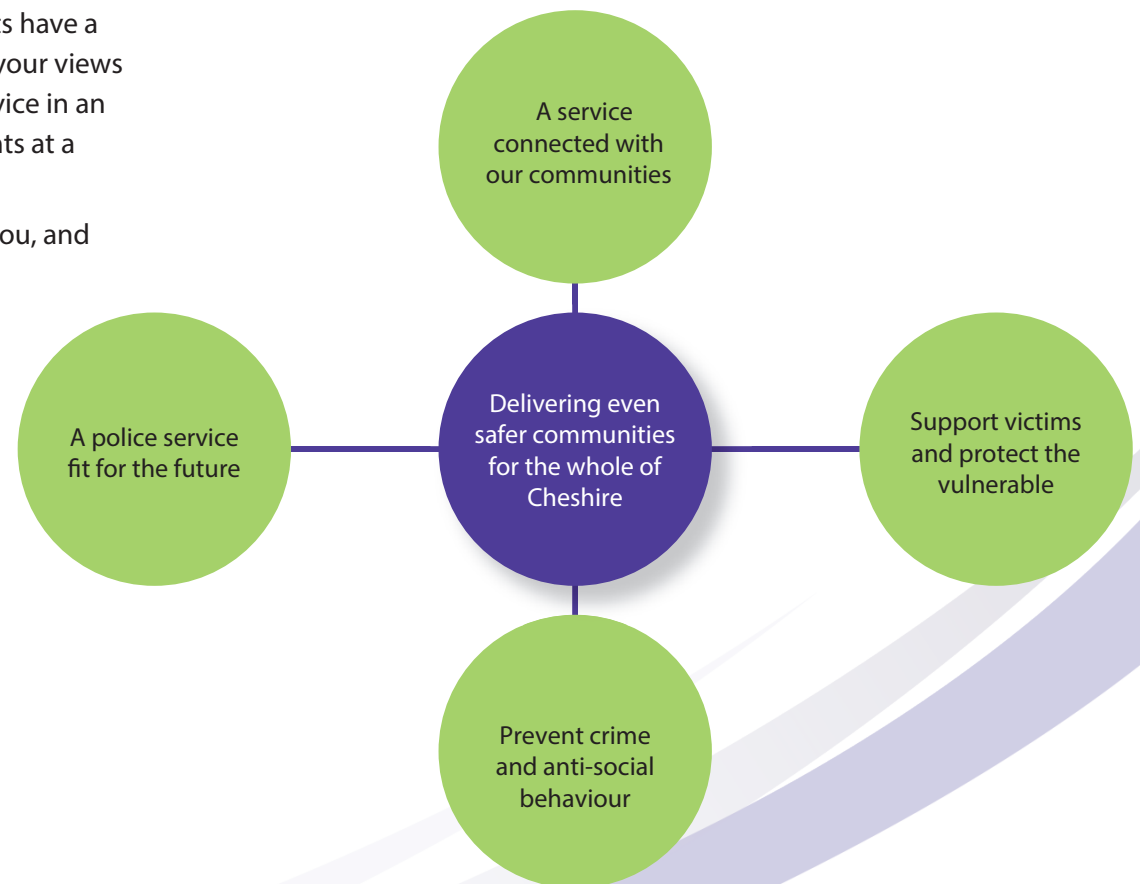
- Terrorism
- Serious and organised crime
- Civil emergencies
- Cyber threats
- Child sexual abuse

Police & Crime Priorities for Cheshire

I want to see the best possible policing service for the people of Cheshire, so that people feel safe in their home and community.

As your elected representative for policing, I will ensure all residents have a voice and that victims are at the heart of our work. I will represent your views in challenging and scrutinising the performance of your police service in an open and transparent way and provide a voice for Cheshire residents at a regional and national level.

I have listened carefully to what you have told me is important to you, and have set four priorities for policing:



A police service connected with our communities

The Chief Constable will:

- Deliver a visible police service with officers, PCSOs and specialist staff spending more time in our communities
- Work with partners to deliver an accessible police service which is based in the heart of communities
- Engage with residents and communities and reflect their needs in local operational plans
- Provide local communities with a named local officer
- Analyse, understand and respond to local, regional and national threats to ensure safe communities
- Work together with partners and myself to engage and support young people on issues relating to policing and crime

Support victims and protect vulnerable people

Working with the Chief Constable and partners we will:

- Provide support for all victims of crime to help them cope and recover from their ordeal
- Support services that prevent, protect and support young people from child sexual abuse
- Listen to the needs of victims to help shape services
- Be a voice for victims and work with criminal justice partners to improve the experiences of victims through the court system
- Work together to support victims and protect people from domestic and sexual violence; and hate crime
- Work together to develop a greater understanding and response to modern day slavery and hidden harm and abuse such as female genital mutilation
- Support the continued development of restorative justice
- Work together to provide an effective response to individuals and families with complex needs, including mental health

Prevent crime and anti-social behaviour

Working with the Chief Constable, Community Safety Partnerships and others we will:

- Improve the safety of our communities
- Prevent and tackle anti-social behaviour
- Tackle drug and alcohol related harm and violence
- Prevent crime and reduce reoffending across Cheshire
- Solve crimes and bring offenders to justice
- Improve the safety of Cheshire's roads through enforcement activity and education
- Promote a safe and vibrant night time economy
- Prevent and protect Cheshire's communities from serious and organised crime
- Work across Cheshire, regionally and nationally to address internet crime and fraud; and emerging threats

A police service fit for the future

Working with the Chief Constable to deliver an efficient and effective police service, we will:

- Challenge the Government to ensure Cheshire has the resources it needs to maintain safe communities
- Invest in technology and equipment that supports officers in our communities
- Invest in an accessible police estate connected with our communities
- Create a more diverse and inclusive police service for Cheshire
- Work with partners to develop new ways of working to support frontline services such as with other Commissioners, the Fire Service and Councils

Finances and People

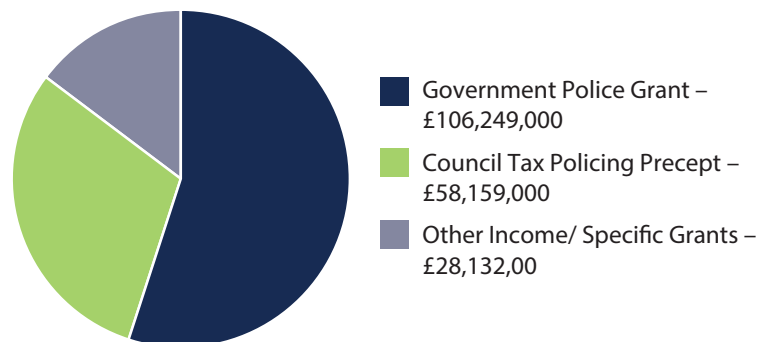
Policing in Cheshire has been subject to significant cuts to funding from the Government over recent years.

I will challenge any further funding reductions from Government, whilst ensuring that your money is spent in the most effective and efficient way possible and processes are in place so that you can monitor its use. This Plan will deliver the best value for money for our communities within a challenging financial environment. My spending decisions will seek to support the local economy. I will also be investing in activity that prevents crime.

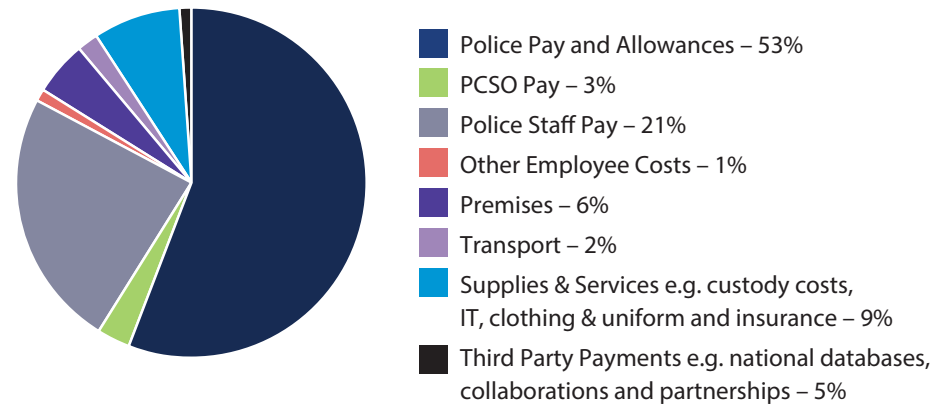
I am required to set an annual budget and policing precept taking into account Government funding, precept regulations and organisational demands. This is supported by the production of a Medium Term Financial Strategy with the annual budget forming the first year of the Strategy.

The budget for policing Cheshire for 2016-17 is £192.5 million. This includes £106.2 million from the Government's Police Grant and £58.1 million generated from the part of council tax allocated to the police – 'police precept'.

CHESHIRE POLICE FUNDING



EXPENDITURE CATEGORIES



The Officers, PCSOs, staff and volunteers working for Cheshire Constabulary are its greatest asset. Alongside the Chief Constable, I will support and promote investment in a modern, well equipped and representative workforce which reflects the diverse make-up of our county.

Following the cuts to police funding a Government commitment has been made to 'maintain overall police force budgets at current cash levels'. However, Government funding decreases each year. This means that in order to keep funding for policing in Cheshire at current levels the local policing precept needs to increase year on year.

The increase in the precept is a decision for local Commissioners. Prior to making any decision, I will always consult with you on the precept level to make sure you have your say and I can hear your views on police funding.

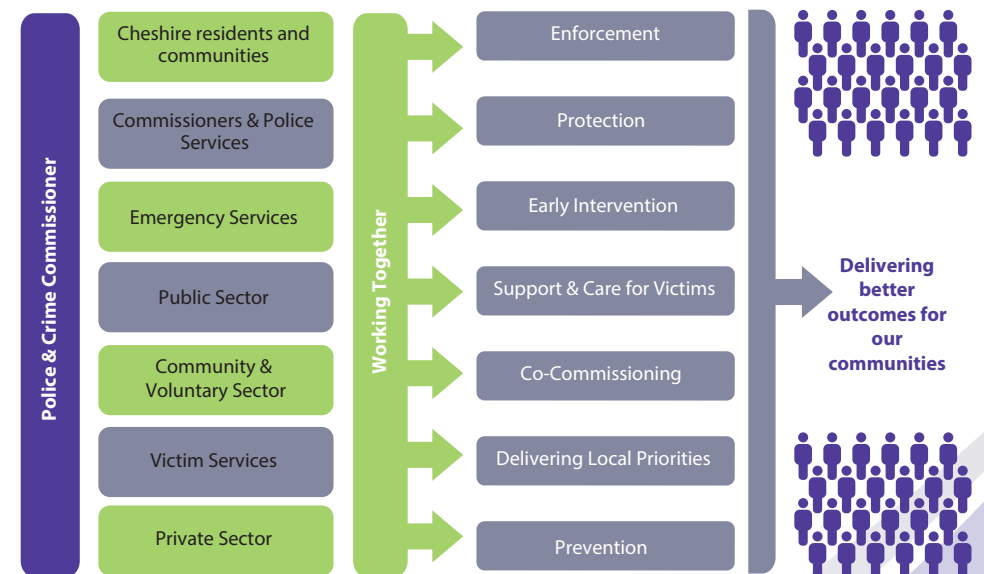
Working in Partnership

Working together with local communities, other police services, public, private and community and voluntary sector organisations will be crucial to the success of this Plan.

The public expect agencies to work together and as Commissioner, I am well placed to provide local community leadership. This will build upon the array of partnerships that are already established across the county and beyond.

I will seek to collaborate at local, regional and national levels to build capacity and capability as well as efficiency. I will be working closely with elected leaders of local and emergency service authorities to drive forward Cheshire wide priorities and identify opportunities for collaborative working in the areas of economic growth and public sector transformation. I will take an active role in working with Cheshire's Criminal Justice Board and will influence and drive close working between local criminal justice, community safety and victim service partners to make sure that effective outcomes are delivered for Cheshire's communities.

My relationship with the community and voluntary sector will be essential and there will be an on-going commitment to the voluntary sector compact agreement which provides a set of overarching principles for how we will work together effectively.



How I will commission services for our communities

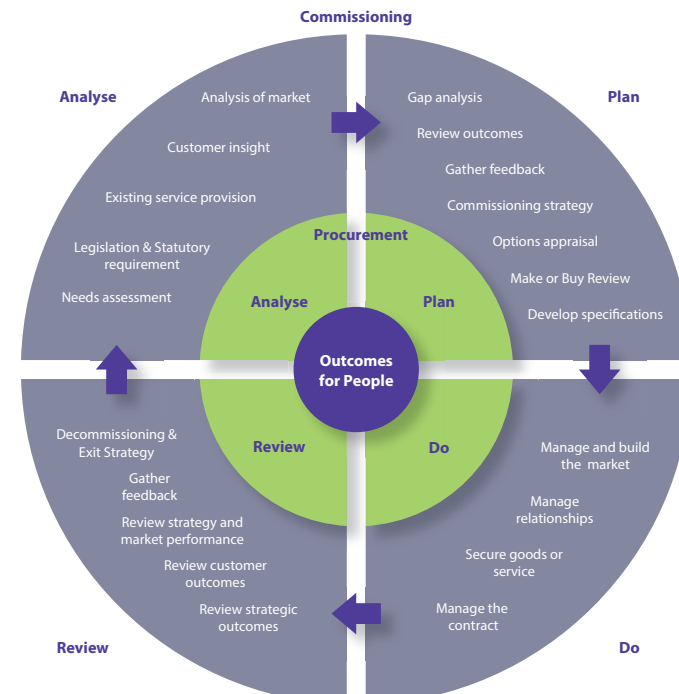
My approach to commissioning services will harness the best of the public, voluntary and community sectors in delivering high quality services for Cheshire residents. There will be a keen focus on ensuring that commissioning activity delivers value for the public and is effectively targeted.

All funding will be set firmly against delivering the priorities outlined in this Plan and will be monitored through specific, measurable, achievable, realistic and timely outcomes for Cheshire's communities.



An evidence based approach of what works to support victims, prevent and reduce crime and improve services to the public will deliver the strongest possible impact. Services will be commissioned against emerging needs, re-commissioning of services will take place where there is a strong evidence base of effectiveness and services will be de-commissioned where they are not considered effective.

A FOUR STAGE PROCESS TO COMMISSIONING WILL BE USED:



This process will be underpinned by a strong ethos of partnership working. I will work with other organisations, and those using services, to develop the most effective and efficient solutions. This will be through exploring options for co-commissioning services and designing services with both market experts and most importantly our communities and those using the services.

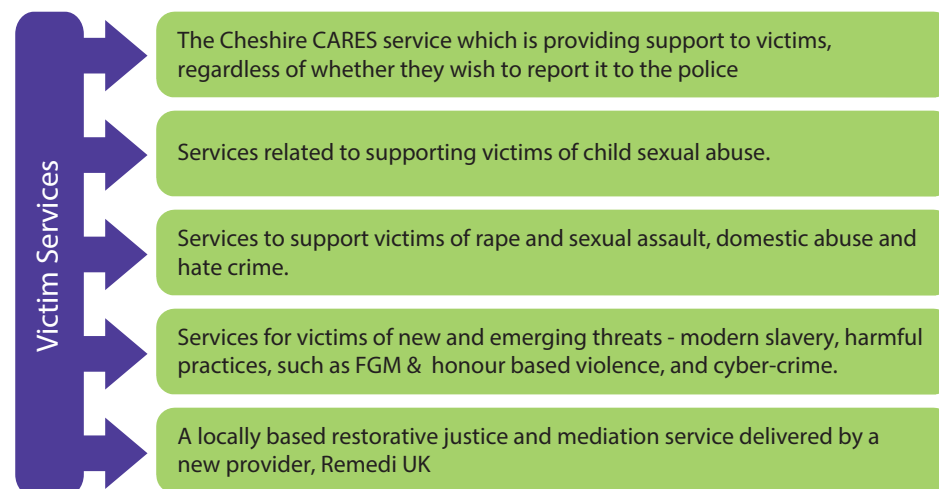
Grants and Funding

My most significant commission is to the Chief Constable for the delivery of an effective and efficient police service for Cheshire, which delivers against the objectives set out in this Plan. The majority of the budget for which I am responsible is allocated to this.

In addition to funding the police service, specific funds are also allocated for victim services and community safety.

Victim Services

Using money devolved from the Ministry of Justice, I will invest in local services to ensure that people receive the support they need to cope and recover from being a victim of crime and protect them from repeat victimisation. In 2016/17 the Ministry of Justice has provided £1.25 million in funds for local victim services. The focus of my commissioning for victims will be:



Services will meet, and where possible exceed, the requirements of the national Victims Code.

Funding is currently provided to me from the Ministry of Justice on a year by year basis. I will argue for a longer term and more stable settlement to support investment in local services.

Community Safety

From within the main police grant a community safety fund has been developed to the value of £983,000 for 2016/17.

I will be working with Community Safety Partnerships, the Youth Offending Service and services tackling substance misuse and reoffending to deliver safer local communities. I will also promote consistency and single best practice where this can achieve better outcomes and value for residents.

During the course of the Plan, this fund will support community safety and crime prevention activity. It will be focused on the priorities outlined in this Plan and will address community safety need on both a local and Cheshire wide basis.



How I will monitor success

I will regularly review the work of the Constabulary on your behalf to ensure you are provided with the policing services promised within this Plan.

I will monitor progress in a number of ways to ensure we are delivering against the four priorities identified. This will include:

- regular visits to communities across Cheshire to understand your views and experiences of policing
- considering what the public and victims of crime are telling us through consultation and surveys
- agreeing a range of measures and actions with the Chief Constable to monitor success in achieving each priority
- holding regular meetings to scrutinise the agreed measures and a wide range of information on all aspects of police performance
- ensuring my Office and the Constabulary meet their duties in relation to equality, diversity and human rights
- consider the results of independent inspections, reports and external audits and ensure the Constabulary responds to any recommendations
- work closely with the Cheshire Police and Crime Panel which is responsible for scrutinising and supporting my work as Police & Crime Commissioner

To keep you up to date on progress, I will:

- ✓ publically scrutinise Constabulary performance
- ✓ publish performance information on my website
- ✓ produce an annual report

‘Join the Conversation’ on policing and crime

Listening to the public, our communities, officers and staff, partner organisations and stakeholders will be a cornerstone of my time in office.

I will invest in, and promote engagement, feedback, reporting and conversations with communities across Cheshire, including with young people and sections of our community that have traditionally been harder to reach.

We will have an on-going conversation about policing and crime in Cheshire which will be used to inform and design plans, support change and drive innovation.

I will take a mixed approach where I will talk with our communities both in partnership, and separate to the Constabulary. This will ensure that I can work hand in hand with the police service where appropriate but crucially act as your advocate in challenging and holding the Chief Constable to account.

The Chief Constable will also make the necessary arrangements, which I will monitor, to inform and engage local communities and obtain views to help set local policing priorities. This will include close relationships with partners across Cheshire and the introduction of clear local communication channels, such as regular reporting from local policing teams to Parish & Town Councils, to ensure visibility of policing activity and challenges on a community level.

How to keep in touch



01606 364000



police.crime.commissioner@cheshire.pnn.police.uk



@cheshirePCC



Police and Crime Commissioner for Cheshire



Office of the Police & Crime Commissioner, Constabulary Headquarters Clemonds Hey,
Oakmere Road, Winsford, Cheshire CW7 2UA

When should I call 101?



To report less urgent crime or disorder, to contact the police with general inquiries or to speak to a local officer. For example:

- if your car has been stolen
- if your property has been damaged
- reporting a minor traffic incident
- where you suspect drug use or dealing
- giving police information about crime in your area.

Always call 999 in an emergency, where there is a threat to life or a crime in progress.